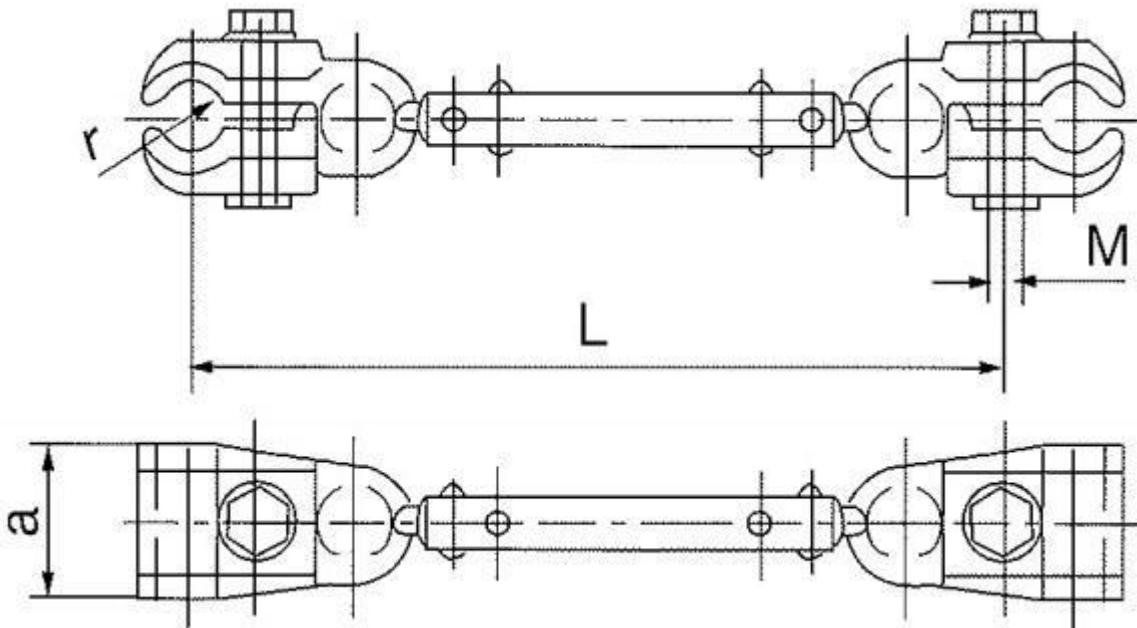


Overview

FJQ Type Twin Damper Spacer with Antivibration

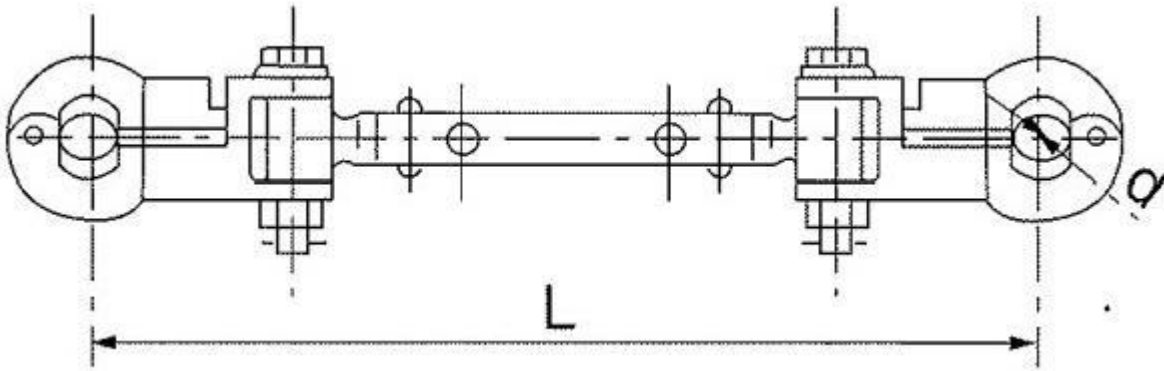
Each of the conductors for long-distance & big-capacity super high voltage transmission lines is adopted two, four & more split wires. So far 220KV & 330KV transmission lines are equipped with two split wires while 500KV transmission lines are outfitted with three or four split wires; those super high voltage or ultrahigh voltage lines that are higher than 500KV are matched with six & eight split wires. In order to keep the distance between the split conductor harnesses invariant for catering to the established electricity performance & reducing voltage gradient appearing on the surface so that the harnesses will not arouse electromagnetic force resulting in the interaction on short circuit, the spacer is needed to be installed on the interval among different spans. Moreover, the installation of a spacer will be also helpful to remove the swing on span & aero vibration.



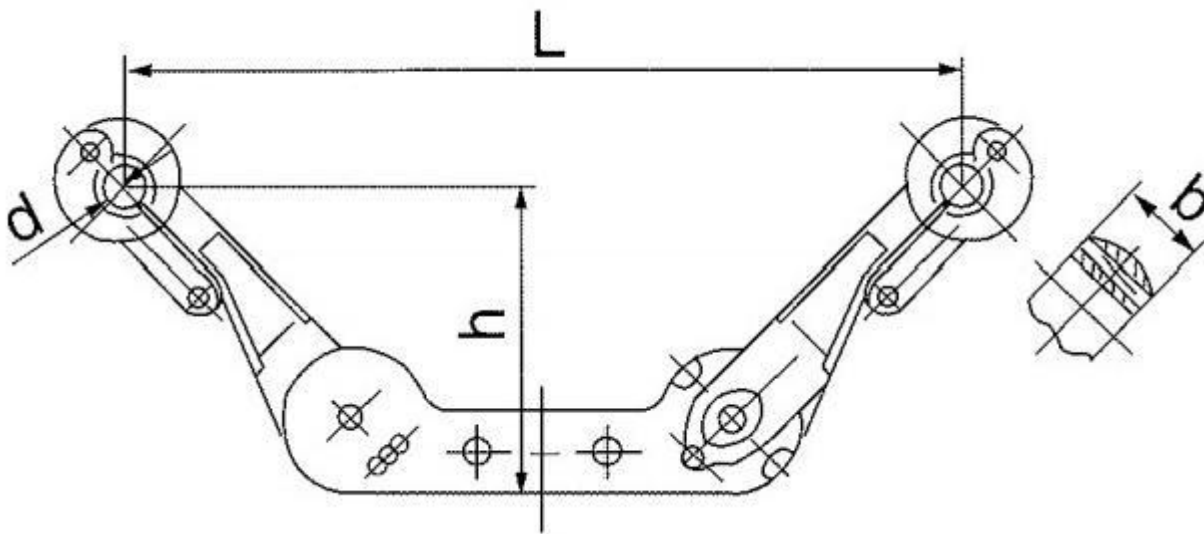
Catalog No.	Suitable Conductor	Dimensions (mm)				Axis-direction Strength(kN)	Weight (Kg)
		a	M	r	L		
FJQ-204	185-240	60	12	11	200	7	0.9
FJC-205	300-400	60	12	14.5	200	10	1.1
JQ-404	185-240	60	12	11	400	7	1
FJQ-405	300-400	60	12	14.5	400	10	1.2
FJQ-405	300-400	70	16	15.4	450	10	2.4

Spacer-Dampers (Type FJZ for Double Conductors)

Preformed spacer uses pre-stranded wire as the connection structure between spacer bar clamp and protected wire, so it has the advantages of convenient and fast installation of pre-stranded metal fittings, good grip on wire (avoiding the loosening of wire clamp caused by thermal expansion and cold contraction), even grip without damaging wire, no hidden danger of bolt loosening (maintenance-free), good corona prevention and energy saving. Pre-twisted wire and clamp are made of aluminum alloy, and have excellent fatigue resistance.



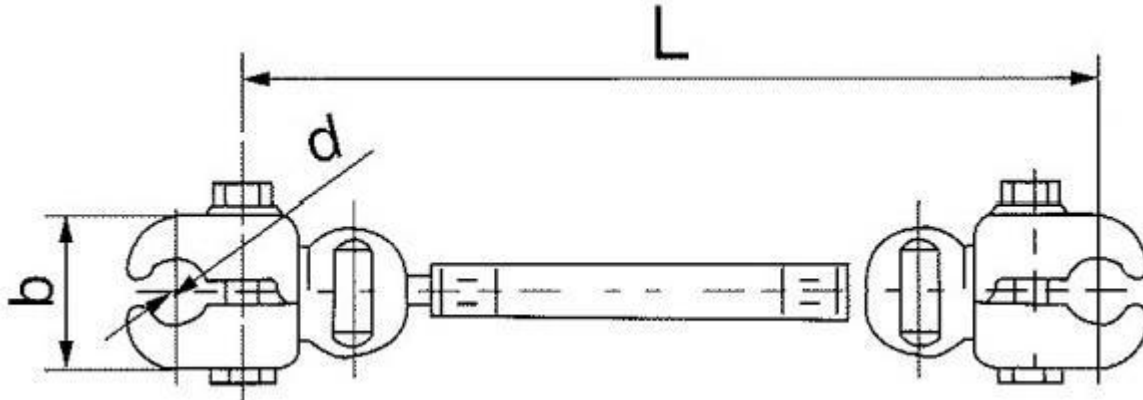
Catalog No.	Suitable Conductor	Dimensions(mm)		Weight (Kg)
		L	D	
FJZ-240/300	LGJ-300/40-50	400	20-24	3.1

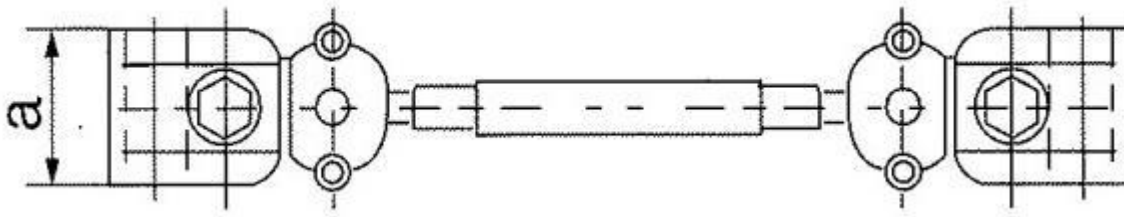


Catalog No.	Suitable Conductor	Dimensions (mm)				Weight(Kg)
		d	b	h	L	
FJZ-255/400	LGJ-400/50-95	27	56	178	550	4

**Spacers (Type FFJQ)**

The body and keepers are aluminium alloy, dampers are elastomer, the other parts are hot-dip galvanized steel.

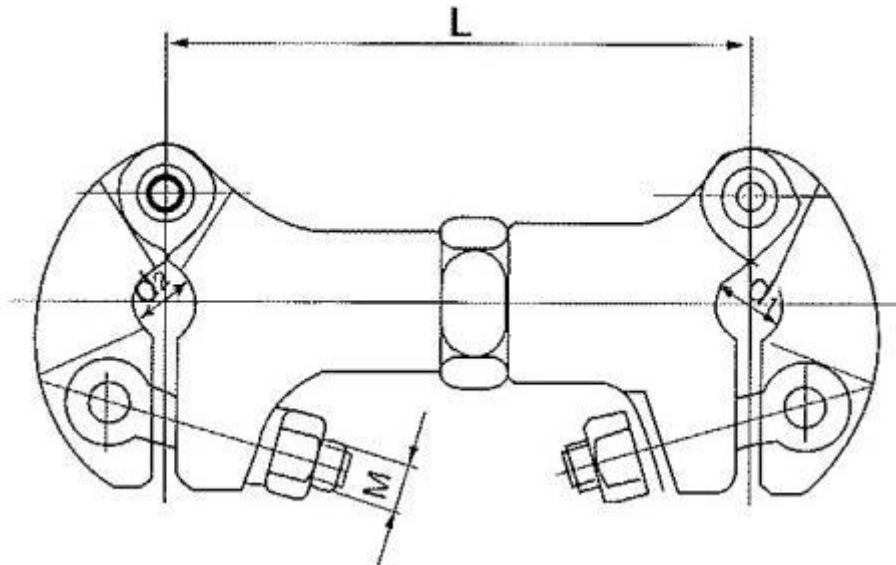




Catalog No.	Suitable Conductor	Dimensions (mm)				Weight(Kg)
		a	b	L	d	
FFJQ-404	LGJ-240/30-55	62	60	400	20-21	2
FFJQ-405	LGJ-300/40-70 LGJ-400/50-95	62	60	400	22-27	2

**Spacers for 500KV Line Jumper Conductor**

The body and keepers are aluminium alloy, dampers are elastomer, the other parts are hot-dip galvanized steel.



Catalog No.	Suitable Conductor	Dimensions (mm)				Weight (Kg)
		d1	d2	M	L	
TJ2-12720	LGJ-720/50	38	25	12	120	1
TJ2-12630	LGJ-630	36	25	12	120	0.9
1TJ2-12500	LGJ-500	32	25	12	120	0.8
TJ2-12300	LGJQ-300	24	18	10	120	0.9
TJ2-12400	LGIQ-400	28	22	10	120	0.8